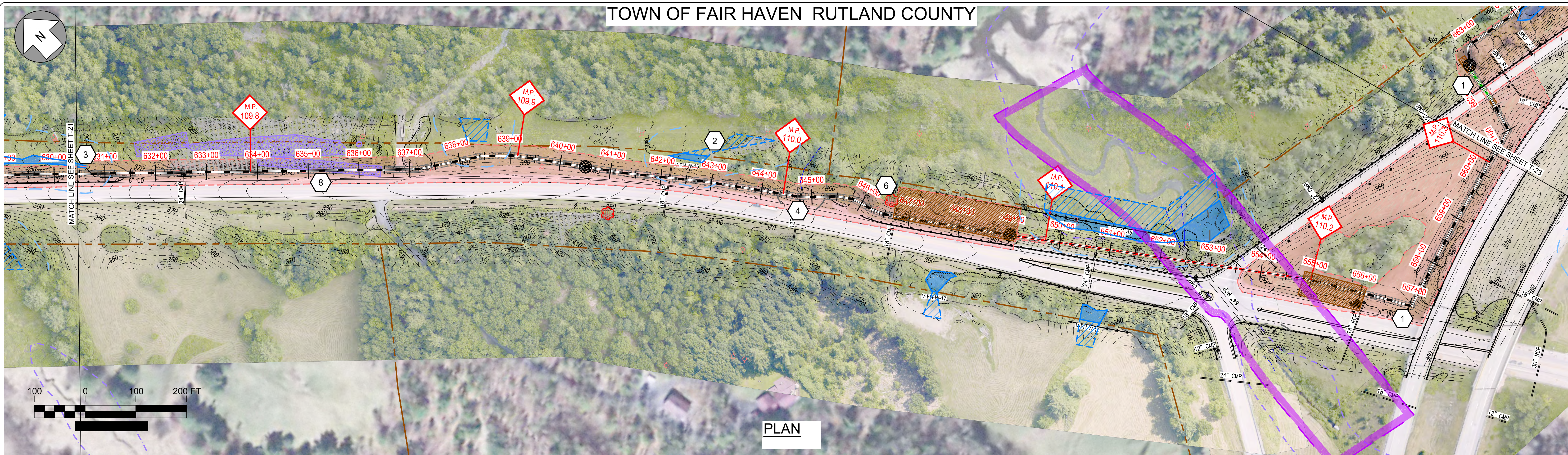


TOWN OF FAIR HAVEN RUTLAND COUNTY



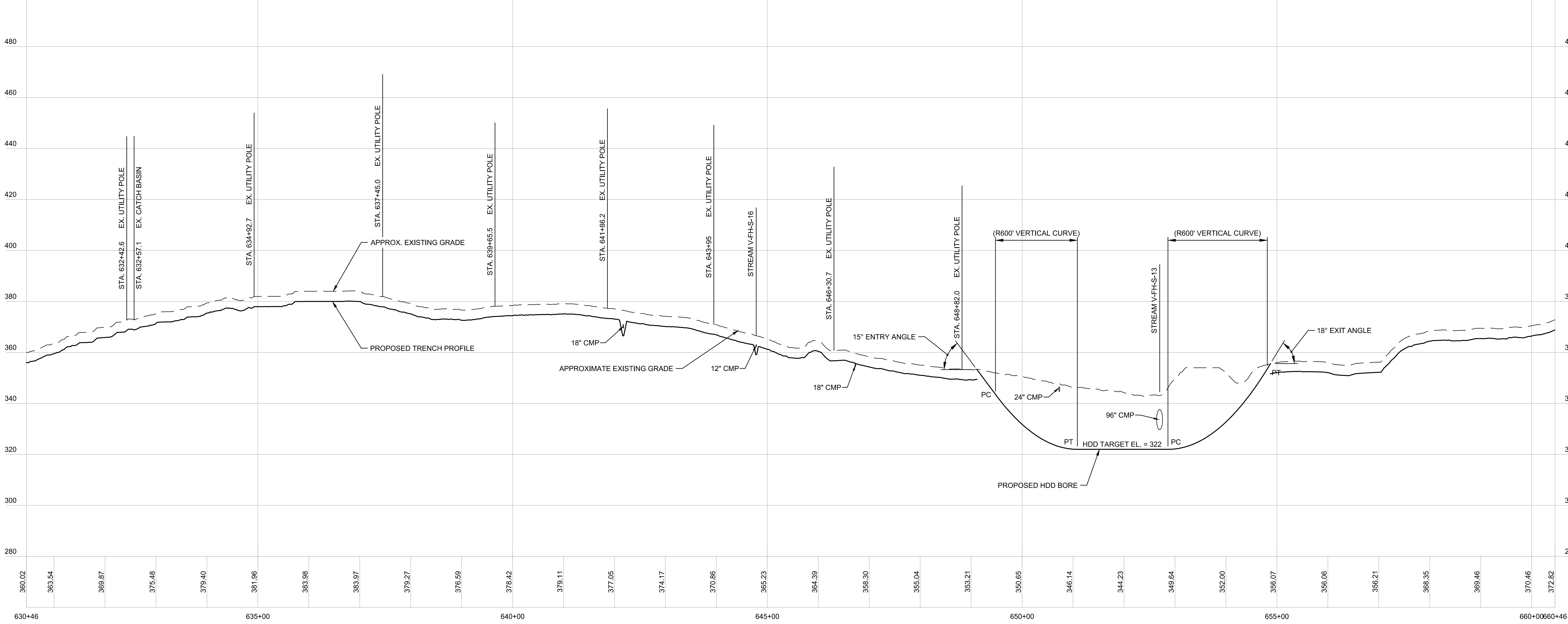
EPSC WORK NOTES

- 1 INSTALL STABILIZED CONSTRUCTION ENTRANCE. SEE TYPICAL DETAIL ON SHEET TD-7.
- 2 DEMARCATÉ LIMIT OF DISTURBANCE AND INSTALL PERIMETER CONTROLS IN ACCORDANCE WITH GENERAL EPSC NOTES AND CONSTRUCTION METHOD TYPICAL DETAILS ON SHEETS G-5 AND CM-1 THRU CM-5.
- 3 WETLAND CROSSING. SEE "TYPICAL WETLAND CONSTRUCTION" ON SHEET TD-7.
- 4 OPEN TRENCH EXCAVATION OR AT-CULVERT STREAM CROSSING TO BE COMPLETED IN ACCORDANCE WITH TYPICAL DETAILS ON SHEETS TD-4 AND TD-5.
- 5 REPLACE STREAM CULVERT IN ACCORDANCE WITH TYPICAL DETAILS ON SHEETS TD-3 AND TD-4.
- 6 DEMARCATÉ AND AVOID POTENTIAL ROOSTING TREE.
- 7 DEMARCATÉ AND AVOID RTE POPULATION.
- 8 IMPLEMENT RTE PLANT PROTECTION PLAN.
- 9 IMPLEMENT RTE ANIMAL PROTECTION PLAN.

PLAN



REFER TO SHEETS CM-1 THROUGH CM-5 FOR CONSTRUCTION METHOD DETAILS.



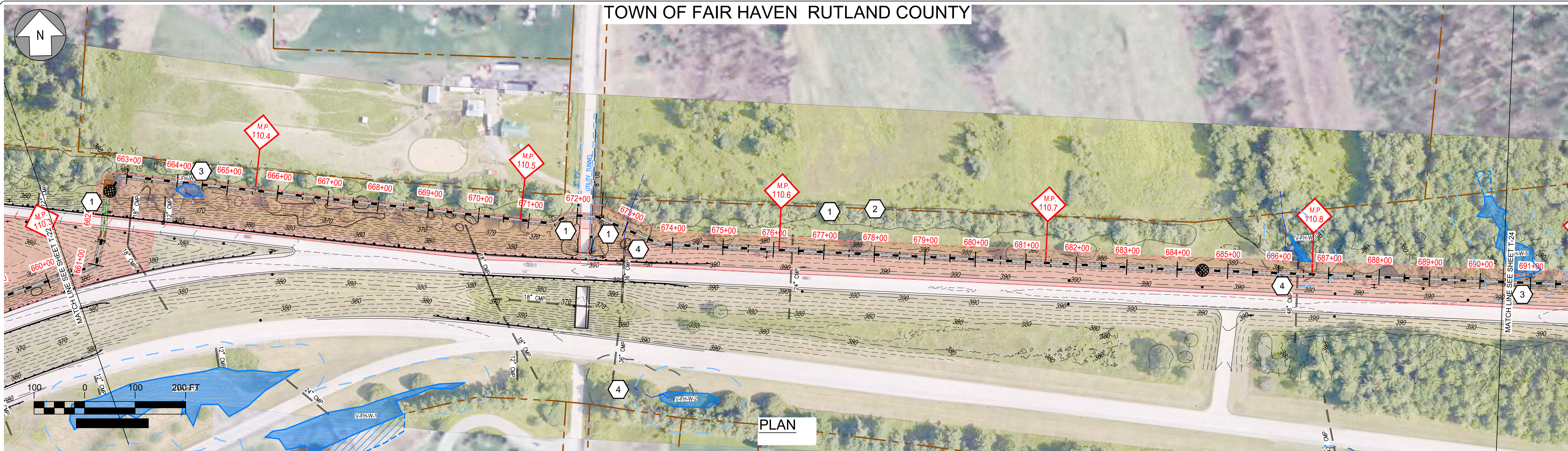
PROFILE

Designed	.
Drawn	.
Checked	.
Approved	.
Scale	AS NOTED

No.	Revision	Date	By	Ck	PE	PE #
A	20% ANR Submission	12/5/14	TRC	AMW		
B	EPSC & PERMITS IFCR	3/8/15	TRC	AMW		
C	ISSUED FOR USE	3/27/15	TRC	AMW		
D	ISSUED FOR PERMITTING	7/24/15	TRC	AMW		

TDI New England
 NEW ENGLAND CLEAN POWER LINK
 TDI New England
 Plan & Profile - Overland Route

TOWN OF FAIR HAVEN RUTLAND COUNTY



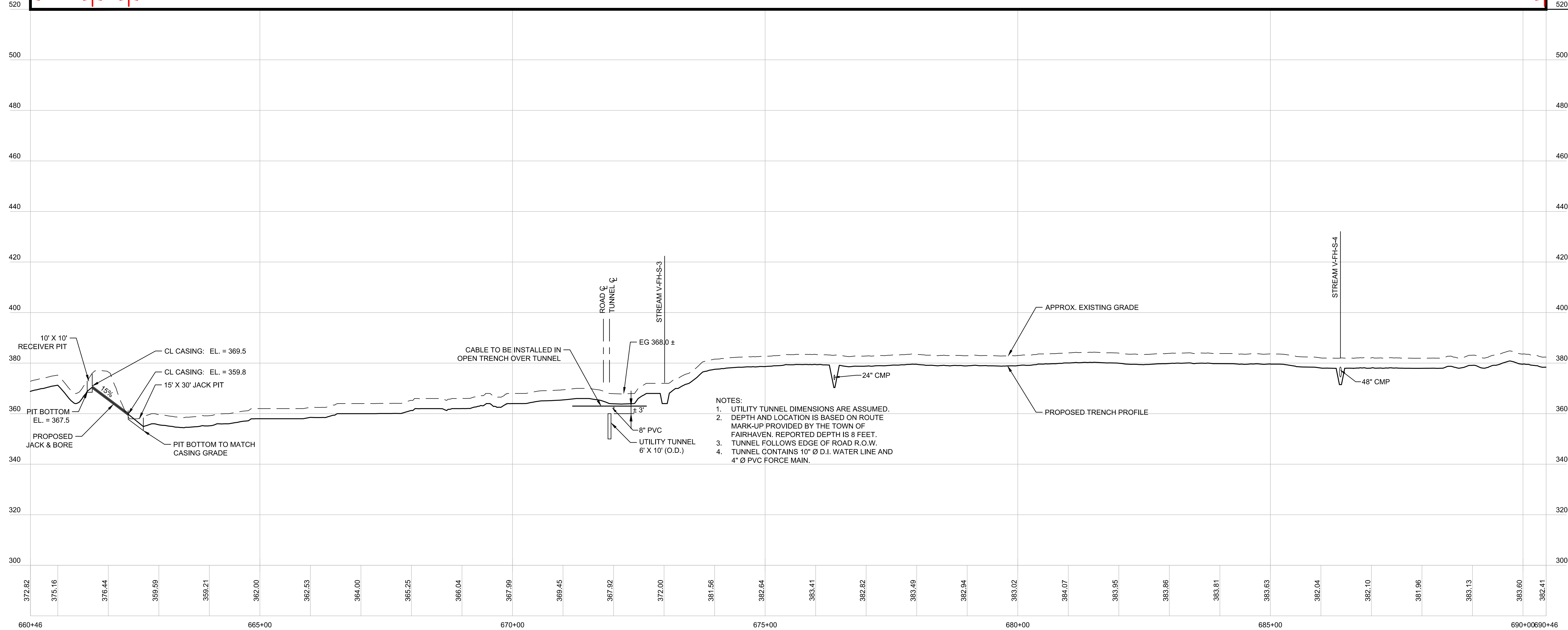
EPSC WORK NOTES

1. INSTALL STABILIZED CONSTRUCTION ENTRANCE. SEE TYPICAL DETAIL ON SHEET TD-7.
2. DEMARCATÉ LIMIT OF DISTURBANCE AND INSTALL PERIMETER CONTROLS IN ACCORDANCE WITH GENERAL EPSC NOTES AND CONSTRUCTION METHOD TYPICAL DETAILS ON SHEETS G-5 AND CM-1 THRU CM-5.
3. WETLAND CROSSING. SEE "TYPICAL WETLAND CONSTRUCTION" ON SHEET TD-7.
4. OPEN TRENCH EXCAVATION OR AT-CULVERT STREAM CROSSING TO BE COMPLETED IN ACCORDANCE WITH TYPICAL DETAILS ON SHEETS TD-4 AND TD-5.
5. REPLACE STREAM CULVERT IN ACCORDANCE WITH TYPICAL DETAILS ON SHEETS TD-3 AND TD-4.
6. DEMARCATÉ AND AVOID POTENTIAL ROOSTING TREE.
7. DEMARCATÉ AND AVOID RTE POPULATION.
8. IMPLEMENT RTE PLANT PROTECTION PLAN.
9. IMPLEMENT RTE ANIMAL PROTECTION PLAN.

CONSTRUCTION METHOD



REFER TO SHEETS CM-1 THROUGH CM-5 FOR CONSTRUCTION METHOD DETAILS.



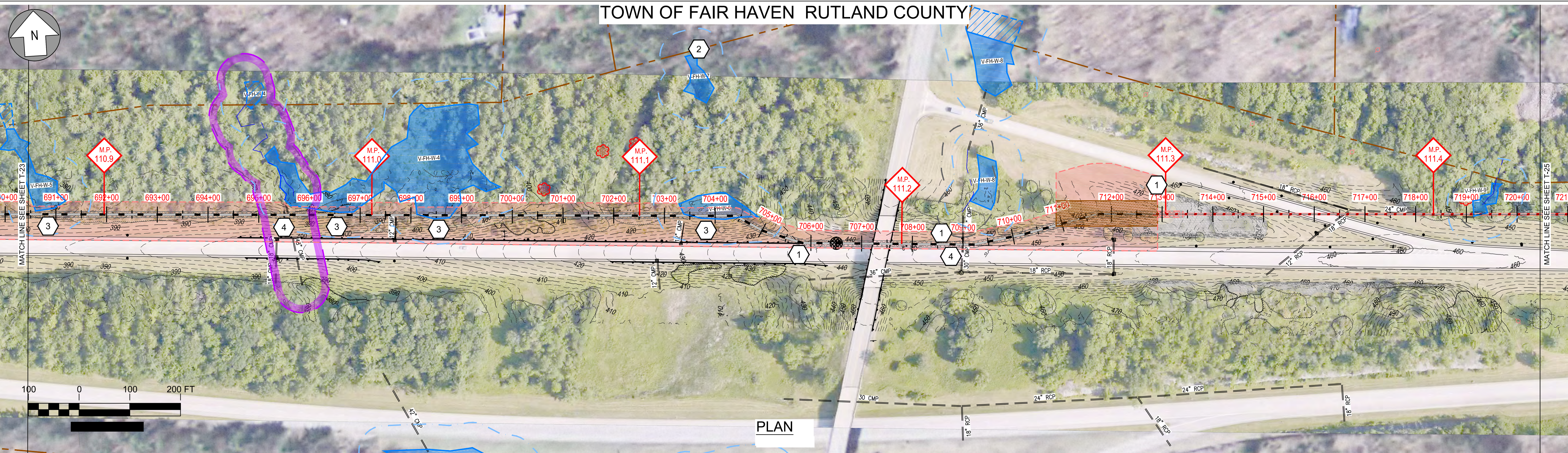
- NOTES:
1. UTILITY TUNNEL DIMENSIONS ARE ASSUMED.
 2. DEPTH AND LOCATION IS BASED ON ROUTE MARK-UP PROVIDED BY THE TOWN OF FAIRHAVEN. REPORTED DEPTH IS 8 FEET.
 3. TUNNEL FOLLOWS EDGE OF ROAD R.O.W.
 4. TUNNEL CONTAINS 10" Ø D.J. WATER LINE AND 4" Ø PVC FORCE MAIN.

Designed	.
Drawn	.
Checked	.
Approved	.
Scale	AS NOTED

No.	Revision	Date	By	Ck	PE	PE #
A	20% ANR Submission	12/5/14	TRC	AMW		
B	EPSC & PERMITS IFCR	3/9/15	TRC	AMW		
C	ISSUED FOR USE	3/27/15	TRC	AMW		
D	ISSUED FOR PERMITTING	7/24/15	TRC	AMW		

TDI New England
 NEW ENGLAND CLEAN POWER LINK
 TDI New England
 Plan & Profile - Overland Route

TOWN OF FAIR HAVEN RUTLAND COUNTY



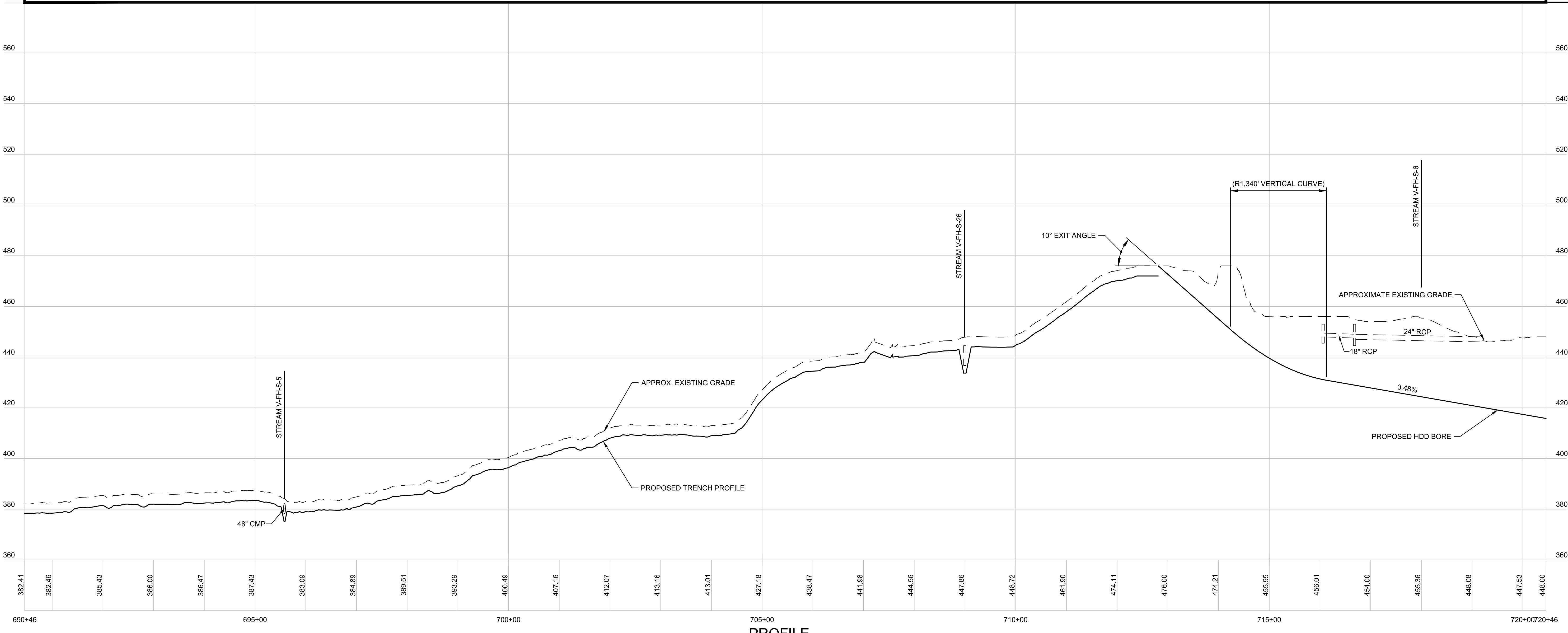
EPSC WORK NOTES

- 1 INSTALL STABILIZED CONSTRUCTION ENTRANCE. SEE TYPICAL DETAIL ON SHEET TD-7.
- 2 DEMARCATATE LIMIT OF DISTURBANCE AND INSTALL PERIMETER CONTROLS IN ACCORDANCE WITH GENERAL EPSC NOTES AND CONSTRUCTION METHOD TYPICAL DETAILS ON SHEETS G-5 AND CM-1 THRU CM-5.
- 3 WETLAND CROSSING. SEE "TYPICAL WETLAND CONSTRUCTION" ON SHEET TD-7.
- 4 OPEN TRENCH EXCAVATION OR AT-CULVERT STREAM CROSSING TO BE COMPLETED IN ACCORDANCE WITH TYPICAL DETAILS ON SHEETS TD-4 AND TD-5.
- 5 REPLACE STREAM CULVERT IN ACCORDANCE WITH TYPICAL DETAILS ON SHEETS TD-3 AND TD-4.
- 6 DEMARCATATE AND AVOID POTENTIAL ROOSTING TREE.
- 7 DEMARCATATE AND AVOID RTE POPULATION.
- 8 IMPLEMENT RTE PLANT PROTECTION PLAN.
- 9 IMPLEMENT RTE ANIMAL PROTECTION PLAN.

PLAN



REFER TO SHEETS CM-1 THROUGH CM-5 FOR CONSTRUCTION METHOD DETAILS.



PROFILE

Designed	.
Drawn	.
Checked	.
Approved	.
Scale	AS NOTED

No.	Revision	Date	By	Ck	PE	PE #
A	20% ANR Submission	12/5/14	TRC	AMW		
B	EPSC & PERMITS IFCR	3/9/15	TRC	AMW		
C	ISSUED FOR USE	3/27/15	TRC	AMW		
D	ISSUED FOR PERMITTING	7/24/15	TRC	AMW		

NEW ENGLAND CLEAN POWER LINK

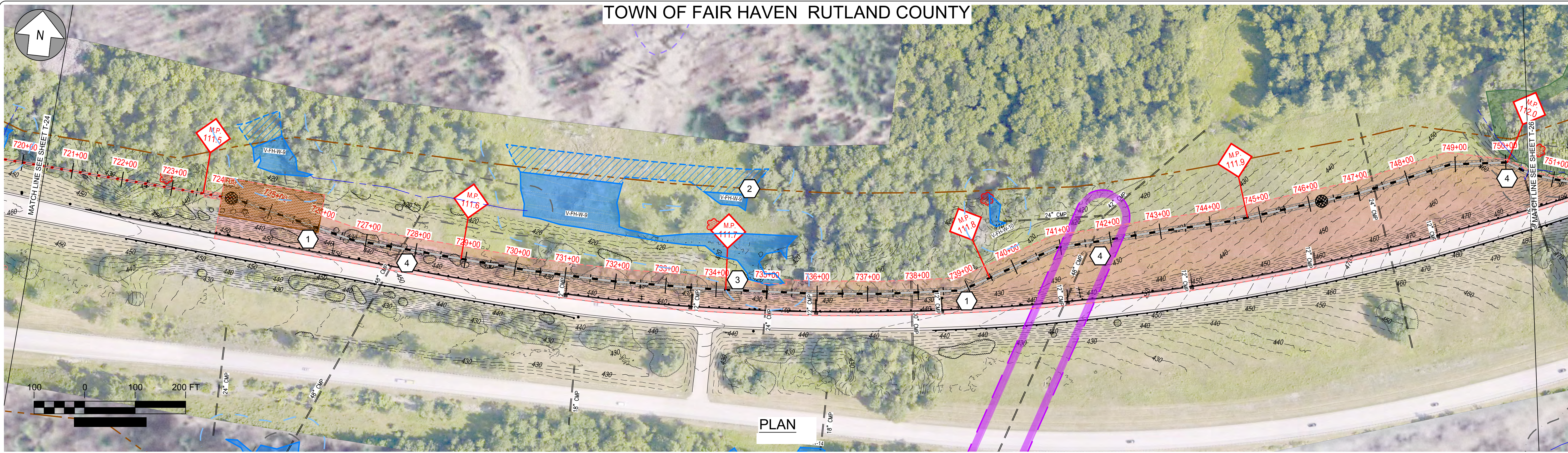
 TDI New England

 Plan & Profile - Overland Route

 T-24

 Prepared by: 9/19/14

TOWN OF FAIR HAVEN RUTLAND COUNTY

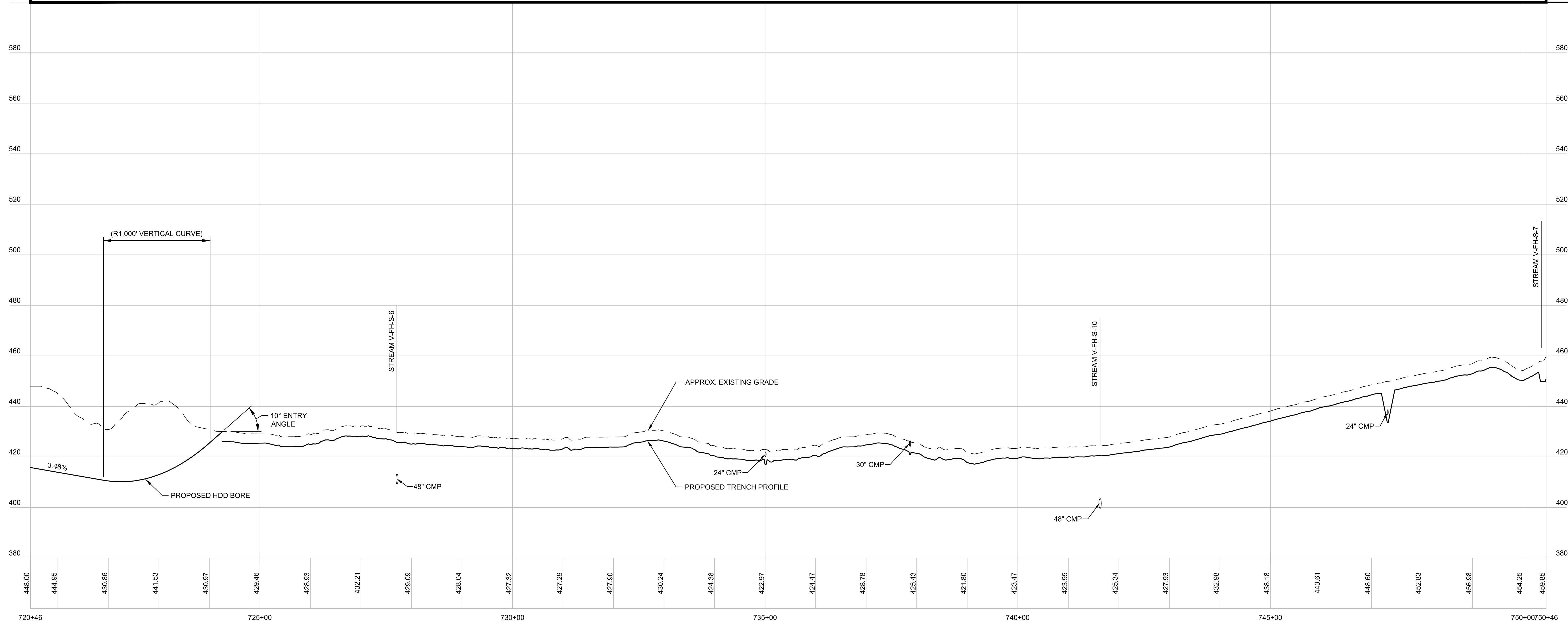


EPSC WORK NOTES

- 1 INSTALL STABILIZED CONSTRUCTION ENTRANCE. SEE TYPICAL DETAIL ON SHEET TD-7.
- 2 DEMARCATÉ LIMIT OF DISTURBANCE AND INSTALL PERIMETER CONTROLS IN ACCORDANCE WITH GENERAL EPSC NOTES AND CONSTRUCTION METHOD TYPICAL DETAILS ON SHEETS G-5 AND CM-1 THRU CM-5.
- 3 WETLAND CROSSING. SEE "TYPICAL WETLAND CONSTRUCTION" ON SHEET TD-7.
- 4 OPEN TRENCH EXCAVATION OR AT-CULVERT STREAM CROSSING TO BE COMPLETED IN ACCORDANCE WITH TYPICAL DETAILS ON SHEETS TD-4 AND TD-5.
- 5 REPLACE STREAM CULVERT IN ACCORDANCE WITH TYPICAL DETAILS ON SHEETS TD-3 AND TD-4.
- 6 DEMARCATÉ AND AVOID POTENTIAL ROOSTING TREE.
- 7 DEMARCATÉ AND AVOID RTE POPULATION.
- 8 IMPLEMENT RTE PLANT PROTECTION PLAN.
- 9 IMPLEMENT RTE ANIMAL PROTECTION PLAN.



REFER TO SHEETS CM-1 THROUGH CM-5 FOR CONSTRUCTION METHOD DETAILS.



PROFILE

Designed	.
Drawn	.
Checked	.
Approved	.
Scale	AS NOTED

No.	Revision	Date	By	Ck	PE	PE #
A	20% ANR Submission	12/5/14	TRC	AMW		
B	EPSC & PERMITS IFCR	3/8/15	TRC	AMW		
C	ISSUED FOR USE	3/27/15	TRC	AMW		
D	ISSUED FOR PERMITTING	7/24/15	TRC	AMW		

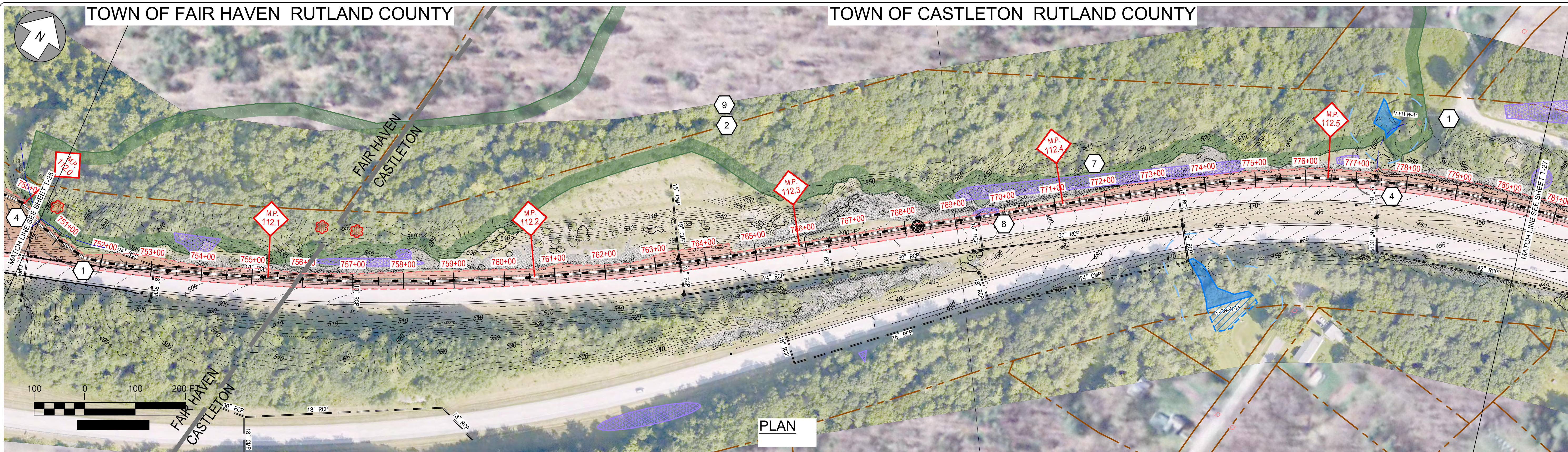
NEW ENGLAND CLEAN POWER LINK

 TDI New England

 Plan & Profile - Overland Route

 T-25

 Prepared by: 9/19/14



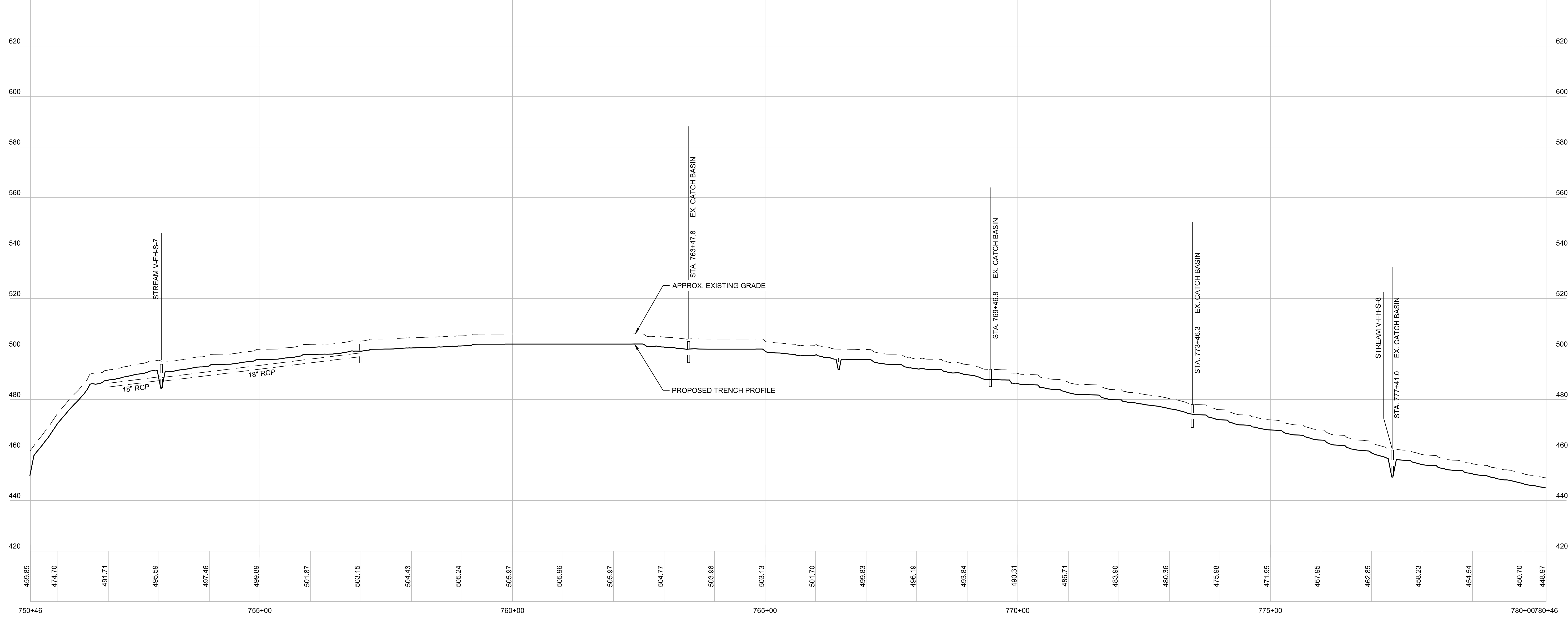
EPSC WORK NOTES

- 1 INSTALL STABILIZED CONSTRUCTION ENTRANCE. SEE TYPICAL DETAIL ON SHEET TD-7.
- 2 DEMARCATÉ LIMIT OF DISTURBANCE AND INSTALL PERIMETER CONTROLS IN ACCORDANCE WITH GENERAL EPSC NOTES AND CONSTRUCTION METHOD TYPICAL DETAILS ON SHEETS G-5 AND CM-1 THRU CM-5.
- 3 WETLAND CROSSING. SEE "TYPICAL WETLAND CONSTRUCTION" ON SHEET TD-7.
- 4 OPEN TRENCH EXCAVATION OR AT-CULVERT STREAM CROSSING TO BE COMPLETED IN ACCORDANCE WITH TYPICAL DETAILS ON SHEETS TD-4 AND TD-5.
- 5 REPLACE STREAM CULVERT IN ACCORDANCE WITH TYPICAL DETAILS ON SHEETS TD-3 AND TD-4.
- 6 DEMARCATÉ AND AVOID POTENTIAL ROOSTING TREE.
- 7 DEMARCATÉ AND AVOID RTE POPULATION.
- 8 IMPLEMENT RTE PLANT PROTECTION PLAN.
- 9 IMPLEMENT RTE ANIMAL PROTECTION PLAN.

PLAN



REFER TO SHEETS CM-1 THROUGH CM-5 FOR CONSTRUCTION METHOD DETAILS.



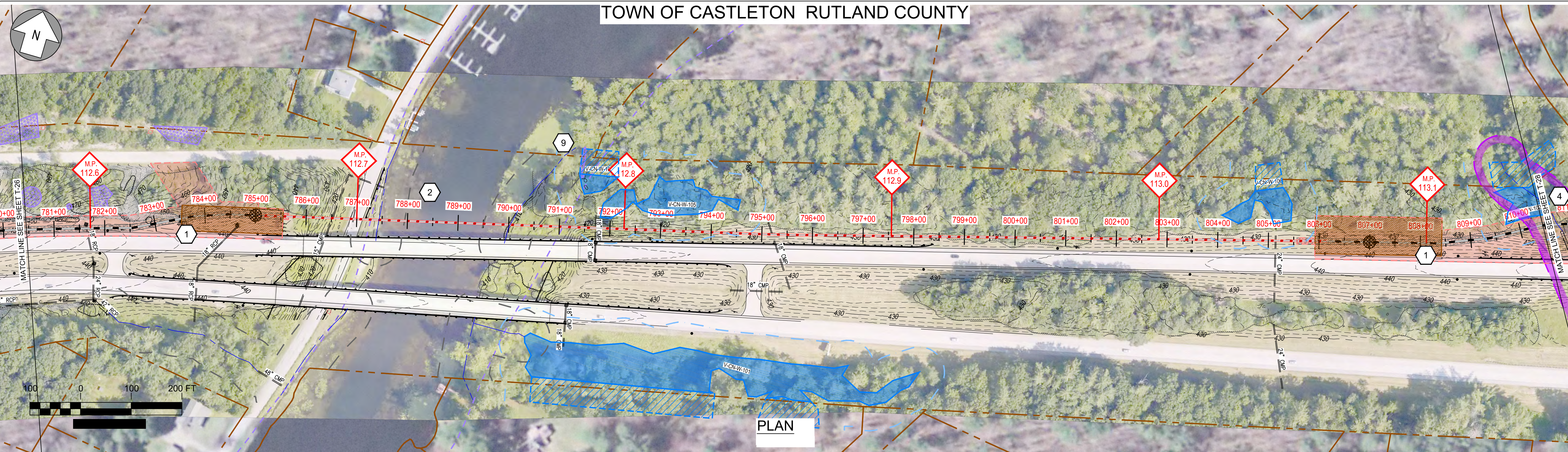
PROFILE

Designed	.
Drawn	.
Checked	.
Approved	.
Scale	AS NOTED

No.	Revision	Date	By	Ck	PE	PE #
A	20% ANR Submission	12/5/14	TRC	AMW		
B	EPSC & PERMITS IFCR	3/9/15	TRC	AMW		
C	ISSUED FOR USE	3/27/15	TRC	AMW		
D	ISSUED FOR PERMITTING	7/24/15	TRC	AMW		

TDI New England
 NEW ENGLAND CLEAN POWER LINK
 TDI New England
 Plan & Profile - Overland Route

TOWN OF CASTLETON RUTLAND COUNTY

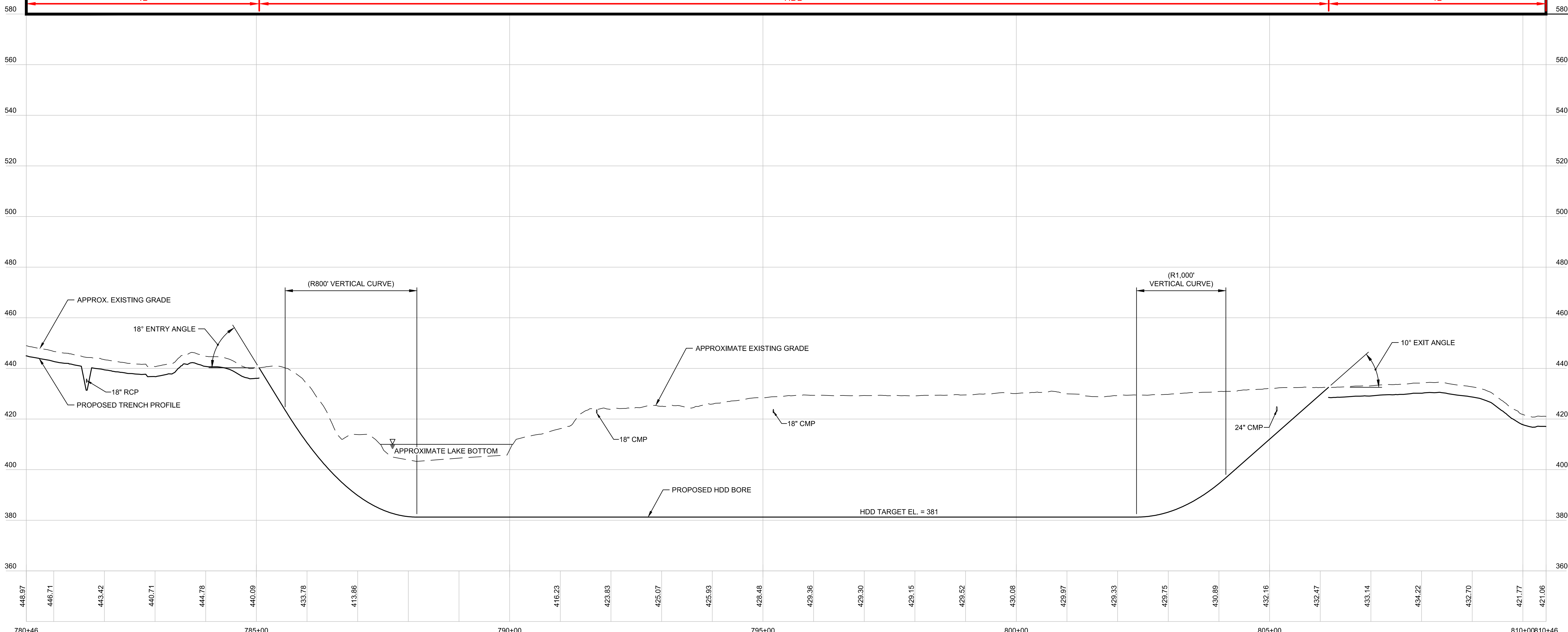


EPSC WORK NOTES

- 1 INSTALL STABILIZED CONSTRUCTION ENTRANCE. SEE TYPICAL DETAIL ON SHEET TD-7.
- 2 DEMARCATÉ LIMIT OF DISTURBANCE AND INSTALL PERIMETER CONTROLS IN ACCORDANCE WITH GENERAL EPSC NOTES AND CONSTRUCTION METHOD TYPICAL DETAILS ON SHEETS G-5 AND CM-1 THRU CM-5.
- 3 WETLAND CROSSING. SEE "TYPICAL WETLAND CONSTRUCTION" ON SHEET TD-7.
- 4 OPEN TRENCH EXCAVATION OR AT-CULVERT STREAM CROSSING TO BE COMPLETED IN ACCORDANCE WITH TYPICAL DETAILS ON SHEETS TD-4 AND TD-5.
- 5 REPLACE STREAM CULVERT IN ACCORDANCE WITH TYPICAL DETAILS ON SHEETS TD-3 AND TD-4.
- 6 DEMARCATÉ AND AVOID POTENTIAL ROOSTING TREE.
- 7 DEMARCATÉ AND AVOID RTE POPULATION.
- 8 IMPLEMENT RTE PLANT PROTECTION PLAN.
- 9 IMPLEMENT RTE ANIMAL PROTECTION PLAN.

CONSTRUCTION METHOD
HDD

REFER TO SHEETS CM-1 THROUGH CM-5 FOR CONSTRUCTION METHOD DETAILS.



PROFILE

Designed	.
Drawn	.
Checked	.
Approved	.
Scale	AS NOTED

No.	Revision	Date	By	Ck	PE	PE #
A	20% ANR Submission	12/5/14	TRC	AMW		
B	EPSC & PERMITS IFCR	3/9/15	TRC	AMW		
C	ISSUED FOR USE	3/27/15	TRC	AMW		
D	ISSUED FOR PERMITTING	7/24/15	TRC	AMW		

NEW ENGLAND CLEAN POWER LINK

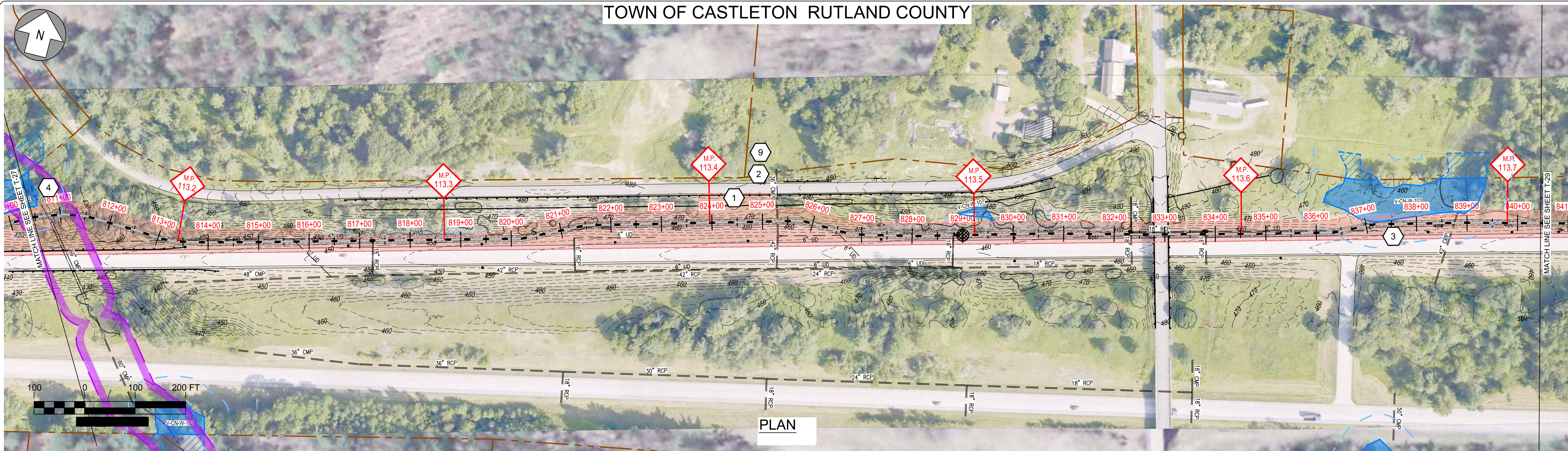
 TDI New England

 Plan & Profile - Overland Route

 T-27

 Prepared by: 9/19/14

TOWN OF CASTLETON RUTLAND COUNTY



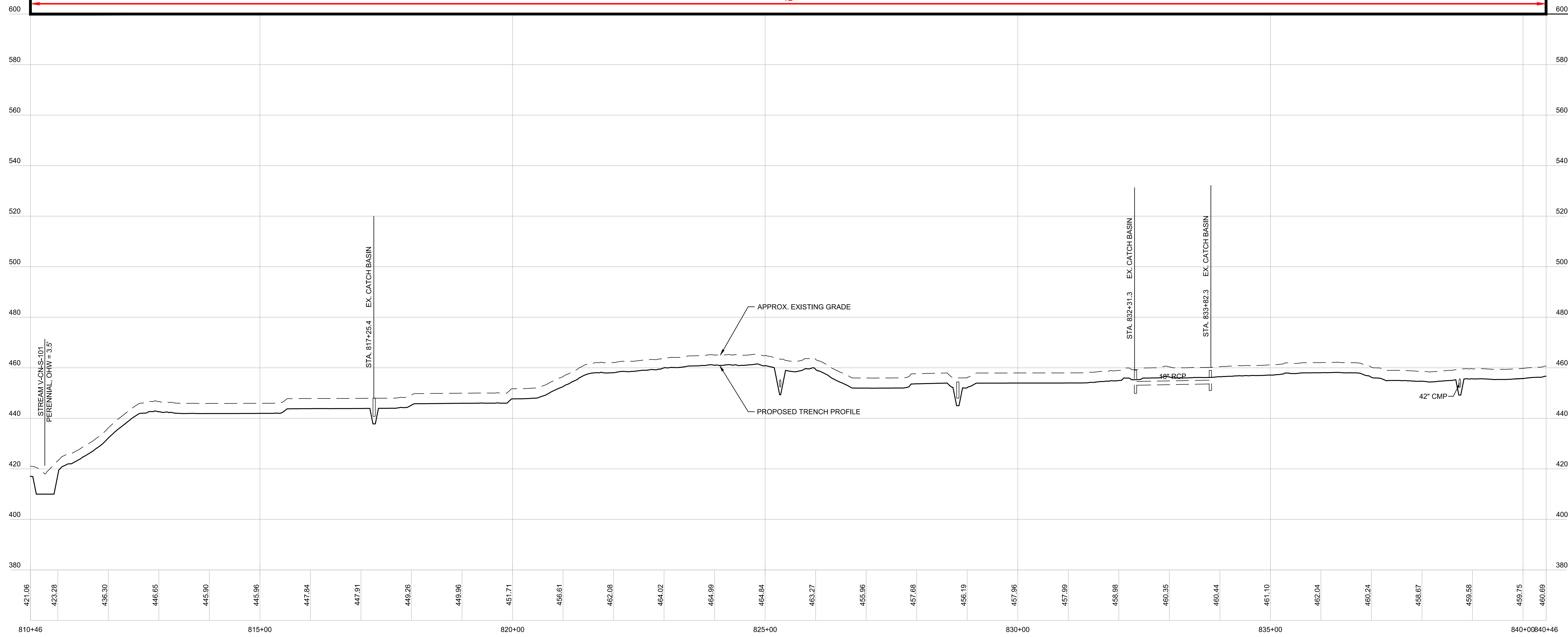
PLAN

EPSC WORK NOTES

- 1 INSTALL STABILIZED CONSTRUCTION ENTRANCE. SEE TYPICAL DETAIL ON SHEET TD-7.
- 2 DEMARCATATE LIMIT OF DISTURBANCE AND INSTALL PERIMETER CONTROLS IN ACCORDANCE WITH GENERAL EPSC NOTES AND CONSTRUCTION METHOD TYPICAL DETAILS ON SHEETS G-5 AND CM-1 THRU CM-5.
- 3 WETLAND CROSSING. SEE "TYPICAL WETLAND CONSTRUCTION" ON SHEET TD-7.
- 4 OPEN TRENCH EXCAVATION OR AT-CULVERT STREAM CROSSING TO BE COMPLETED IN ACCORDANCE WITH TYPICAL DETAILS ON SHEETS TD-4 AND TD-5.
- 5 REPLACE STREAM CULVERT IN ACCORDANCE WITH TYPICAL DETAILS ON SHEETS TD-3 AND TD-4.
- 6 DEMARCATATE AND AVOID POTENTIAL ROOSTING TREE.
- 7 DEMARCATATE AND AVOID RTE POPULATION.
- 8 IMPLEMENT RTE PLANT PROTECTION PLAN.
- 9 IMPLEMENT RTE ANIMAL PROTECTION PLAN.

CONSTRUCTION METHOD
4D

REFER TO SHEETS CM-1 THROUGH CM-5 FOR CONSTRUCTION METHOD DETAILS.



PROFILE

Designed	.
Drawn	.
Checked	.
Approved	.
Scale	AS NOTED

No.	Revision	Date	By	Ck	PE	PE #
A	20% ANR Submission	12/5/14	TRC	AMW		
B	EPSC & PERMITS IFCR	3/9/15	TRC	AMW		
C	ISSUED FOR USE	3/27/15	TRC	AMW		
D	ISSUED FOR PERMITTING	7/24/15	TRC	AMW		

NEW ENGLAND CLEAN POWER LINK

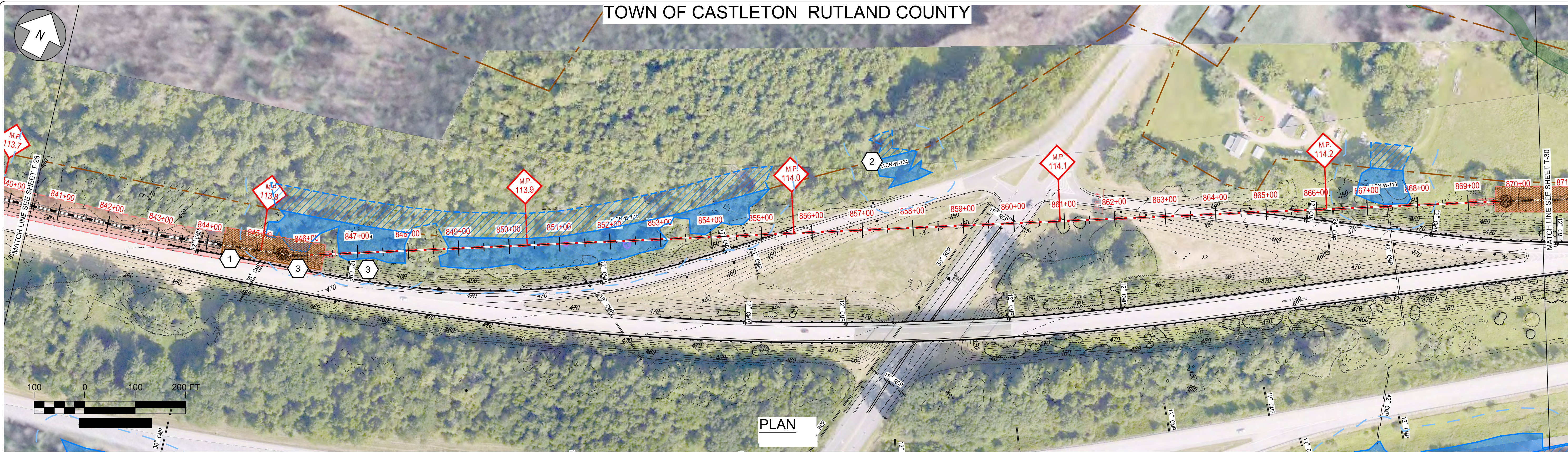
 TDI New England

 Plan & Profile - Overland Route

 T-28

 Prepared by: 9/19/14

TOWN OF CASTLETON RUTLAND COUNTY



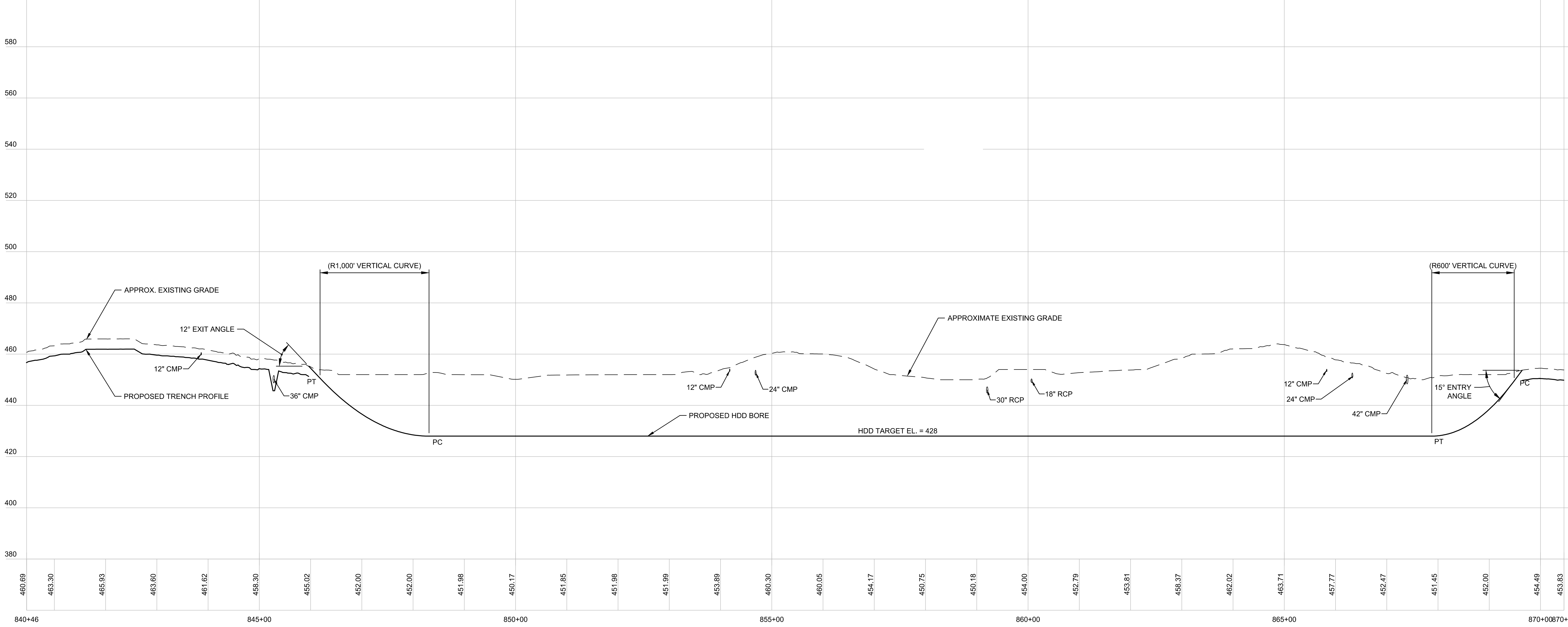
EPSC WORK NOTES

- 1 INSTALL STABILIZED CONSTRUCTION ENTRANCE. SEE TYPICAL DETAIL ON SHEET TD-7.
- 2 DEMARCATATE LIMIT OF DISTURBANCE AND INSTALL PERIMETER CONTROLS IN ACCORDANCE WITH GENERAL EPSC NOTES AND CONSTRUCTION METHOD TYPICAL DETAILS ON SHEETS G-5 AND CM-1 THRU CM-5.
- 3 WETLAND CROSSING. SEE "TYPICAL WETLAND CONSTRUCTION" ON SHEET TD-7.
- 4 OPEN TRENCH EXCAVATION OR AT-CULVERT STREAM CROSSING TO BE COMPLETED IN ACCORDANCE WITH TYPICAL DETAILS ON SHEETS TD-4 AND TD-5.
- 5 REPLACE STREAM CULVERT IN ACCORDANCE WITH TYPICAL DETAILS ON SHEETS TD-3 AND TD-4.
- 6 DEMARCATATE AND AVOID POTENTIAL ROOSTING TREE.
- 7 DEMARCATATE AND AVOID RTE POPULATION.
- 8 IMPLEMENT RTE PLANT PROTECTION PLAN.
- 9 IMPLEMENT RTE ANIMAL PROTECTION PLAN.

CONSTRUCTION METHOD



REFER TO SHEETS CM-1 THROUGH CM-5 FOR CONSTRUCTION METHOD DETAILS.



PROFILE

Designed	.
Drawn	.
Checked	.
Approved	.
Scale	AS NOTED

No.	Revision	Date	By	Ck	PE	PE #
A	20% ANR Submission	12/5/14	TRC	AMW		
B	EPSC & PERMITS IFCR	3/9/15	TRC	AMW		
C	ISSUED FOR USE	3/27/15	TRC	AMW		
D	ISSUED FOR PERMITTING	7/24/15	TRC	AMW		

NEW ENGLAND CLEAN POWER LINK

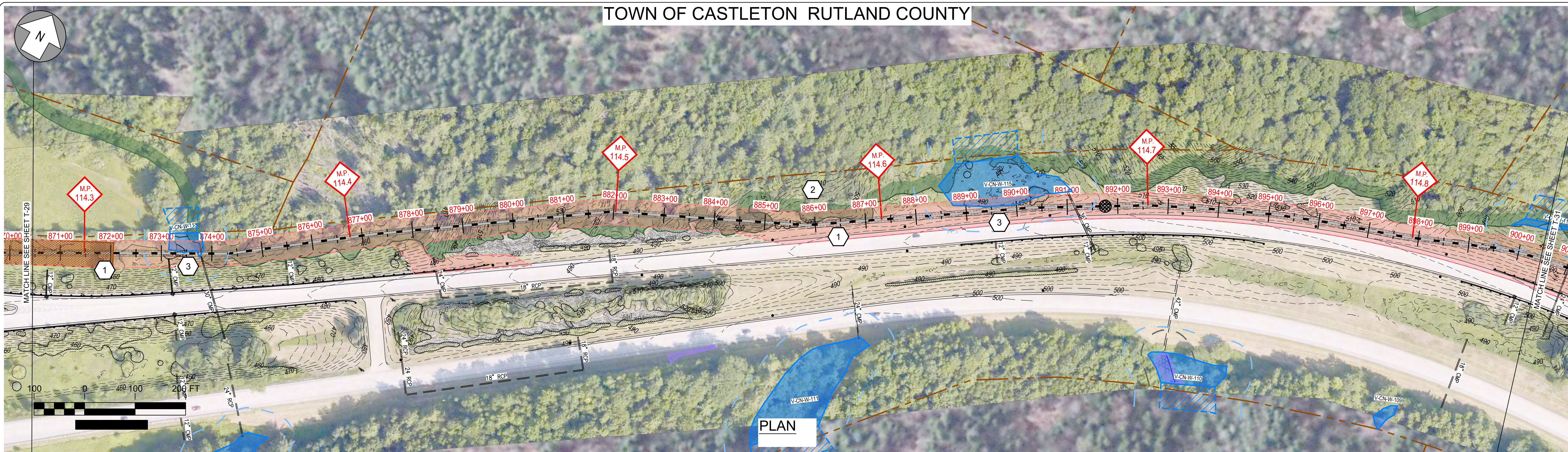
 TDI New England

 Plan & Profile - Overland Route

 T-29

 Prepared by: 9/19/14

TOWN OF CASTLETON RUTLAND COUNTY



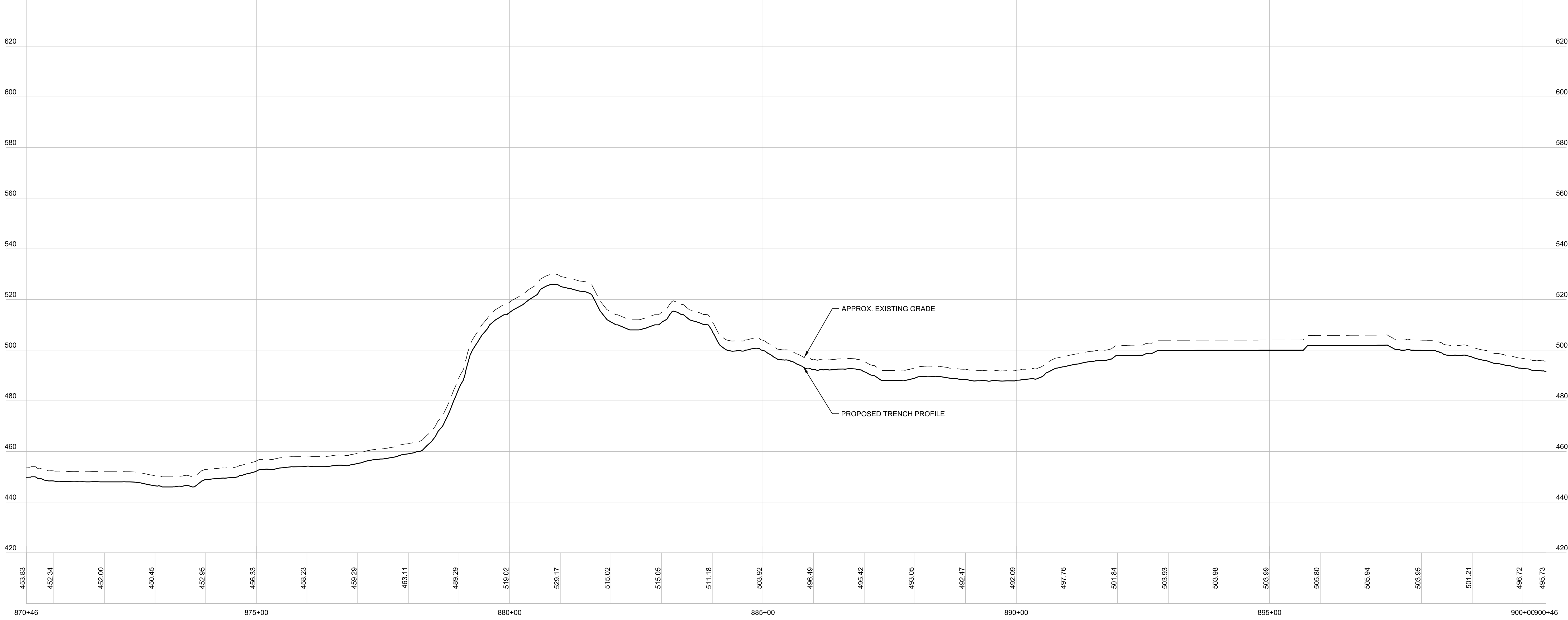
EPSC WORK NOTES

- 1 INSTALL STABILIZED CONSTRUCTION ENTRANCE. SEE TYPICAL DETAIL ON SHEET TD-7.
- 2 DEMARCATÉ LIMIT OF DISTURBANCE AND INSTALL PERIMETER CONTROLS IN ACCORDANCE WITH GENERAL EPSC NOTES AND CONSTRUCTION METHOD TYPICAL DETAILS ON SHEETS G-5 AND CM-1 THRU CM-5.
- 3 WETLAND CROSSING. SEE "TYPICAL WETLAND CONSTRUCTION" ON SHEET TD-7.
- 4 OPEN TRENCH EXCAVATION OR AT-CULVERT STREAM CROSSING TO BE COMPLETED IN ACCORDANCE WITH TYPICAL DETAILS ON SHEETS TD-4 AND TD-5.
- 5 REPLACE STREAM CULVERT IN ACCORDANCE WITH TYPICAL DETAILS ON SHEETS TD-3 AND TD-4.
- 6 DEMARCATÉ AND AVOID POTENTIAL ROOSTING TREE.
- 7 DEMARCATÉ AND AVOID RTE POPULATION.
- 8 IMPLEMENT RTE PLANT PROTECTION PLAN.
- 9 IMPLEMENT RTE ANIMAL PROTECTION PLAN.

CONSTRUCTION METHOD



REFER TO SHEETS CM-1 THROUGH CM-5 FOR CONSTRUCTION METHOD DETAILS.



PROFILE

Designed	.
Drawn	.
Checked	.
Approved	.
Scale	AS NOTED

No.	Revision	Date	By	Ck	PE	PE #
A	20% ANR Submission	12/5/14	TRC	AMW		
B	EPSC & PERMITS IFCR	3/9/15	TRC	AMW		
C	ISSUED FOR USE	3/27/15	TRC	AMW		
D	ISSUED FOR PERMITTING	7/24/15	TRC	AMW		

NEW ENGLAND CLEAN POWER LINK

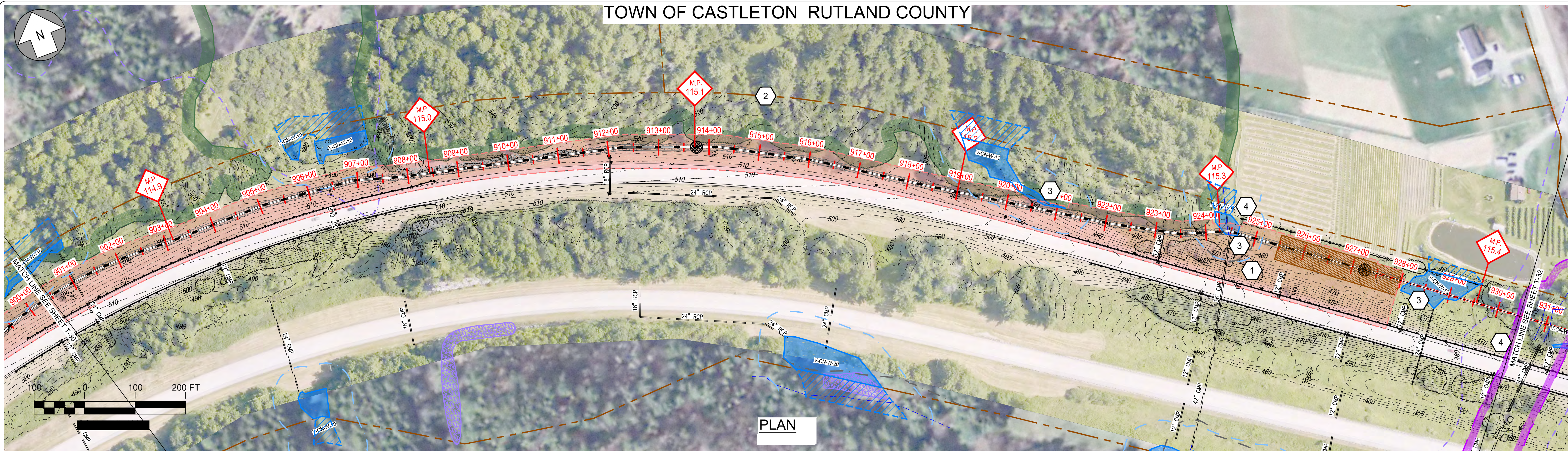
TDI New England

 Plan & Profile - Overland Route

T-30

 Prepared by: 9/19/14

TOWN OF CASTLETON RUTLAND COUNTY

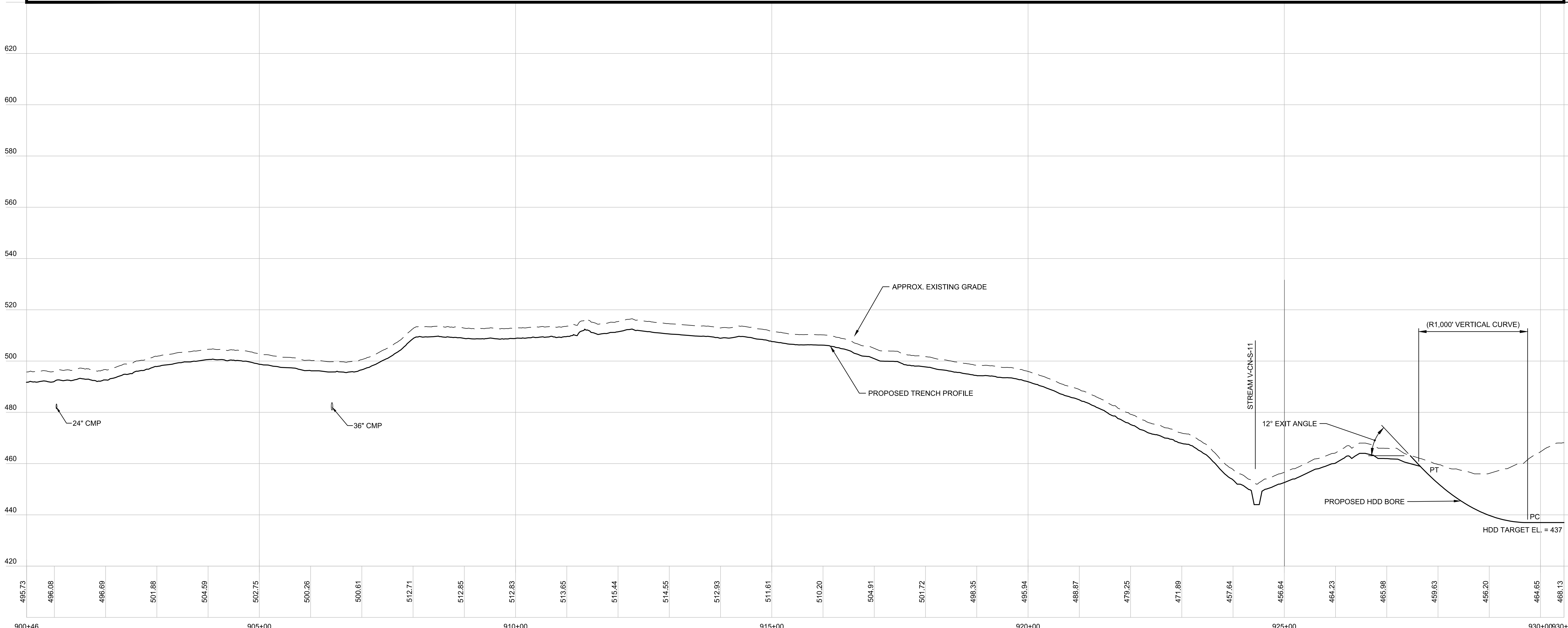


EPSC WORK NOTES

- 1 INSTALL STABILIZED CONSTRUCTION ENTRANCE. SEE TYPICAL DETAIL ON SHEET TD-7.
- 2 DEMARCATÉ LIMIT OF DISTURBANCE AND INSTALL PERIMETER CONTROLS IN ACCORDANCE WITH GENERAL EPSC NOTES AND CONSTRUCTION METHOD TYPICAL DETAILS ON SHEETS G-5 AND CM-1 THRU CM-5.
- 3 WETLAND CROSSING. SEE "TYPICAL WETLAND CONSTRUCTION" ON SHEET TD-7.
- 4 OPEN TRENCH EXCAVATION OR AT-CULVERT STREAM CROSSING TO BE COMPLETED IN ACCORDANCE WITH TYPICAL DETAILS ON SHEETS TD-4 AND TD-5.
- 5 REPLACE STREAM CULVERT IN ACCORDANCE WITH TYPICAL DETAILS ON SHEETS TD-3 AND TD-4.
- 6 DEMARCATÉ AND AVOID POTENTIAL ROOSTING TREE.
- 7 DEMARCATÉ AND AVOID RTE POPULATION.
- 8 IMPLEMENT RTE PLANT PROTECTION PLAN.
- 9 IMPLEMENT RTE ANIMAL PROTECTION PLAN.



REFER TO SHEETS CM-1 THROUGH CM-5 FOR CONSTRUCTION METHOD DETAILS.



Designed	.
Drawn	.
Checked	.
Approved	.
Scale	AS NOTED

No.	Revision	Date	By	Ck	PE	PE #
A	20% ANR Submission	12/5/14	TRC	AMW		
B	EPSC & PERMITS IFCR	3/8/15	TRC	AMW		
C	ISSUED FOR USE	3/27/15	TRC	AMW		
D	ISSUED FOR PERMITTING	7/24/15	TRC	AMW		

NEW ENGLAND CLEAN POWER LINK

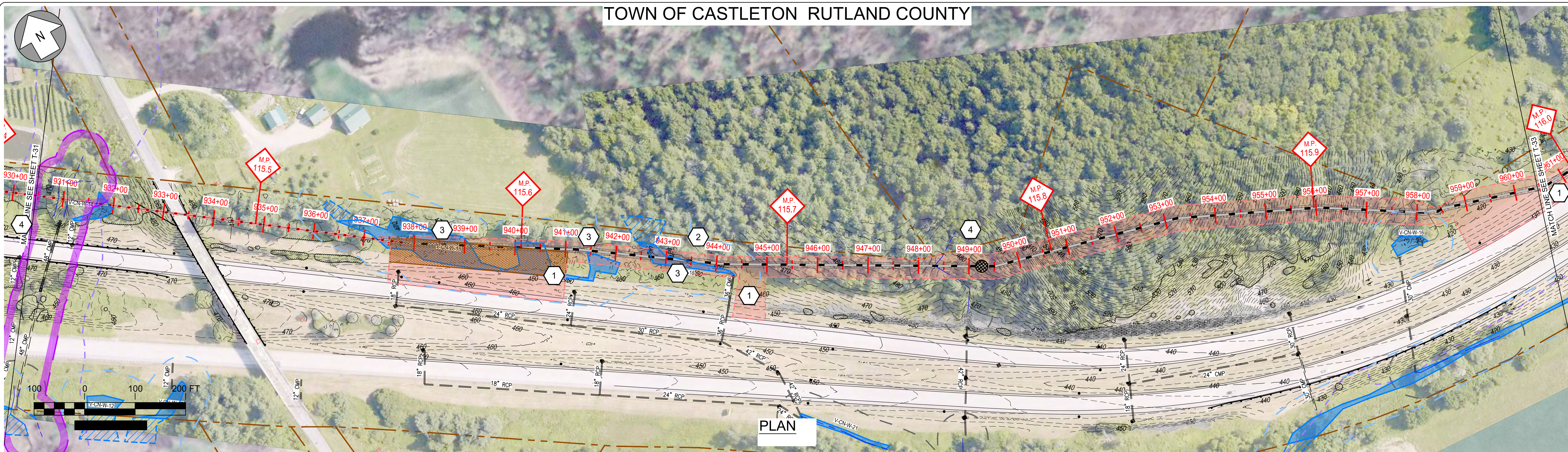
TDI New England

 Plan & Profile - Overland Route

T-31

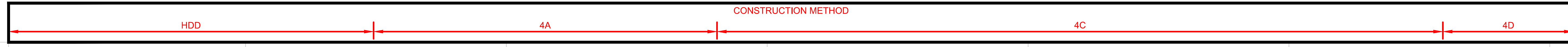
 Prepared by: 9/19/14

TOWN OF CASTLETON RUTLAND COUNTY

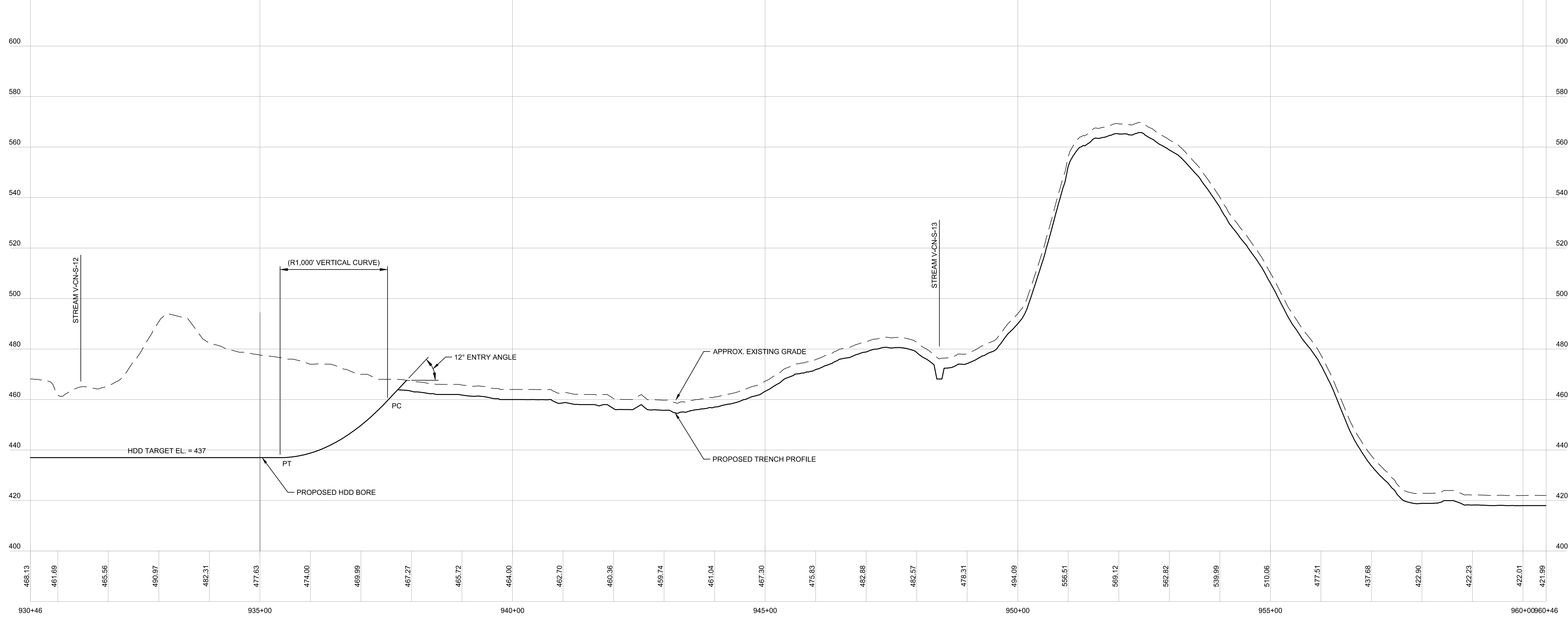


EPSC WORK NOTES

- 1 INSTALL STABILIZED CONSTRUCTION ENTRANCE. SEE TYPICAL DETAIL ON SHEET TD-7.
- 2 DEMARCATATE LIMIT OF DISTURBANCE AND INSTALL PERIMETER CONTROLS IN ACCORDANCE WITH GENERAL EPSC NOTES AND CONSTRUCTION METHOD TYPICAL DETAILS ON SHEETS G-5 AND CM-1 THRU CM-5.
- 3 WETLAND CROSSING. SEE "TYPICAL WETLAND CONSTRUCTION" ON SHEET TD-7.
- 4 OPEN TRENCH EXCAVATION OR AT-CULVERT STREAM CROSSING TO BE COMPLETED IN ACCORDANCE WITH TYPICAL DETAILS ON SHEETS TD-4 AND TD-5.
- 5 REPLACE STREAM CULVERT IN ACCORDANCE WITH TYPICAL DETAILS ON SHEETS TD-3 AND TD-4.
- 6 DEMARCATATE AND AVOID POTENTIAL ROOSTING TREE.
- 7 DEMARCATATE AND AVOID RTE POPULATION.
- 8 IMPLEMENT RTE PLANT PROTECTION PLAN.
- 9 IMPLEMENT RTE ANIMAL PROTECTION PLAN.



REFER TO SHEETS CM-1 THROUGH CM-5 FOR CONSTRUCTION METHOD DETAILS.



Designed	.
Drawn	.
Checked	.
Approved	.
Scale	AS NOTED

No.	Revision	Date	By	Ck	PE	PE #
A	20% ANR Submission	12/5/14	TRC	AMW		
B	EPSC & PERMITS IFCR	3/8/15	TRC	AMW		
C	ISSUED FOR USE	3/27/15	TRC	AMW		
D	ISSUED FOR PERMITTING	7/24/15	TRC	AMW		

NEW ENGLAND CLEAN POWER LINK

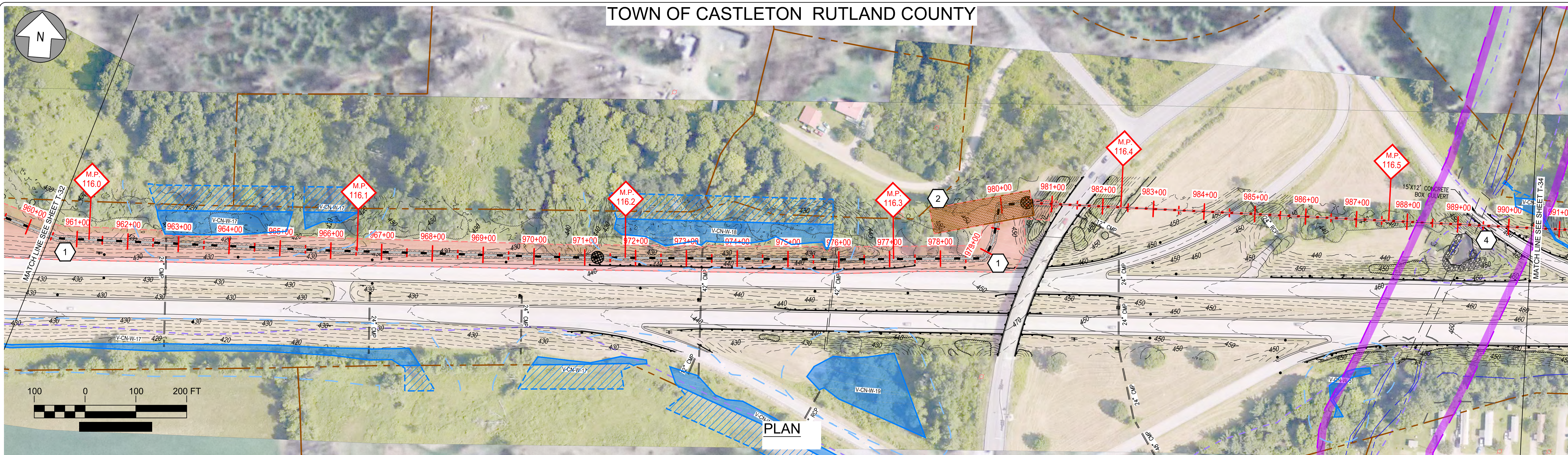
 TDI New England

 Plan & Profile - Overland Route

 T-32

 Prepared by: 9/19/14

TOWN OF CASTLETON RUTLAND COUNTY

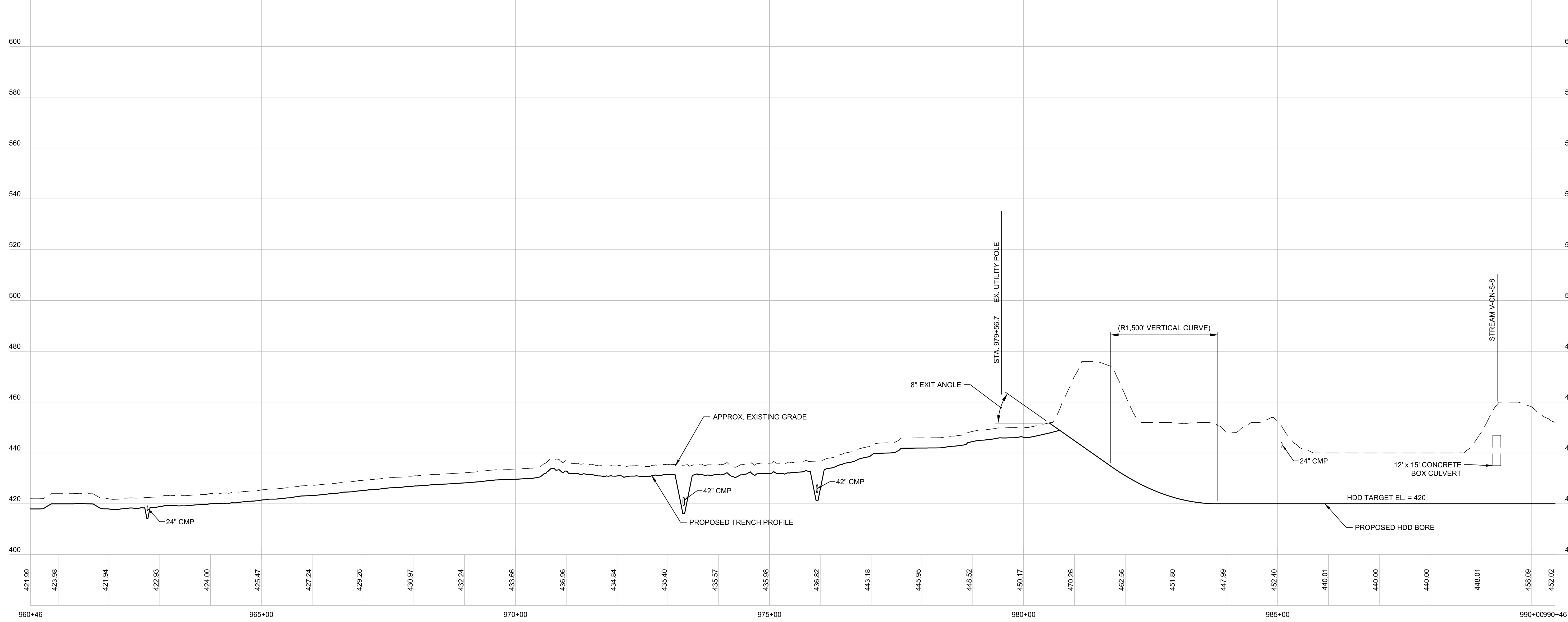


EPSC WORK NOTES

- 1 INSTALL STABILIZED CONSTRUCTION ENTRANCE. SEE TYPICAL DETAIL ON SHEET TD-7.
- 2 DEMARCATATE LIMIT OF DISTURBANCE AND INSTALL PERIMETER CONTROLS IN ACCORDANCE WITH GENERAL EPSC NOTES AND CONSTRUCTION METHOD TYPICAL DETAILS ON SHEETS G-5 AND CM-1 THRU CM-5.
- 3 WETLAND CROSSING. SEE "TYPICAL WETLAND CONSTRUCTION" ON SHEET TD-7.
- 4 OPEN TRENCH EXCAVATION OR AT-CULVERT STREAM CROSSING TO BE COMPLETED IN ACCORDANCE WITH TYPICAL DETAILS ON SHEETS TD-4 AND TD-5.
- 5 REPLACE STREAM CULVERT IN ACCORDANCE WITH TYPICAL DETAILS ON SHEETS TD-3 AND TD-4.
- 6 DEMARCATATE AND AVOID POTENTIAL ROOSTING TREE.
- 7 DEMARCATATE AND AVOID RTE POPULATION.
- 8 IMPLEMENT RTE PLANT PROTECTION PLAN.
- 9 IMPLEMENT RTE ANIMAL PROTECTION PLAN.



REFER TO SHEETS CM-1 THROUGH CM-5 FOR CONSTRUCTION METHOD DETAILS.



Designed	.
Drawn	.
Checked	.
Approved	.
Scale	AS NOTED

No.	Revision	Date	By	Ck	PE	PE #
A	20% ANR Submission	12/5/14	TRC	AMW		
B	EPSC & PERMITS IFCR	3/8/15	TRC	AMW		
C	ISSUED FOR USE	3/27/15	TRC	AMW		
D	ISSUED FOR PERMITTING	7/24/15	TRC	AMW		

NEW ENGLAND CLEAN POWER LINK

 TDI New England

 Plan & Profile - Overland Route